



Age, Gender, and Women's Health and the Patient

Lesley A. Houghton,^{1,2} Margaret Heitkemper,³ Michael D. Crowell,⁴ Anton Emmanuel,⁵ Alben Halpert,⁶ James A. McRoberts,⁷ and Brenda Toner⁸

¹Division of Gastroenterology and Hepatology, Mayo Clinic, Jacksonville, Florida; ²Centre for Gastrointestinal Sciences, University of Manchester, Manchester, United Kingdom; ³University of Washington, Seattle, Washington; ⁴Division of Gastroenterology and Hepatology, Mayo Clinic, Scottsdale, Arizona; ⁵University College London, London, United Kingdom; ⁶Boston Medical Center, Boston, Massachusetts; ⁷University of California, Los Angeles, California; ⁸University of Toronto, Toronto, Ontario, Canada

Patients with functional gastrointestinal disorders (FGIDs) often experience distress, reduced quality of life, a perceived lack of validation, and an unsatisfactory experience with health care providers. A health care provider can provide the patient with a framework in which to understand and legitimize their symptoms, remove self-doubt or blame, and identify factors that contribute to symptoms that the patient can influence or control. This framework is implemented with the consideration of important factors that impact FGIDs, such as gender, age, society, and the patient's perspective. Although the majority of FGIDs, including globus, rumination syndrome, irritable bowel syndrome, bloating, constipation, functional abdominal pain, sphincter of Oddi dyskinesia, pelvic floor dysfunction, and extraintestinal manifestations, are more prevalent in women than in men, functional chest pain, dyspepsia, vomiting, and anorectal pain do not appear to vary by gender. Studies have suggested sex differences in somatic, but not visceral, pain perception, motility, and central processing of visceral pain; although further research is required in autonomic nervous system dysfunction, genetics, and immunologic/microbiome. Gender differences in response to psychological treatments, antidepressants, fiber, probiotics, and anticholinergics have not been studied adequately. However, a greater clinical response to 5-HT₃ antagonists but not 5-HT₄ agonists has been reported in women compared with men.

Keywords: Sex; Development; Society; Symptoms.

This review discusses the patient's perspective and biological basis for sex and gender differences in functional gastrointestinal disorders (FGIDs). Attention is given to the lived experience of irritable bowel syndrome (IBS) as well as the importance of patient interaction with the health care provider. In addition, the review highlights the current literature related to gender- and sex-based differences in visceral and somatic sensitivity, pain, motility, and the overlap of FGIDs, in particular IBS, with other chronic conditions.

The Patient Perspective

The Patient Experience of FGIDs

"IBS is very frustrating: it dominates life style and daily activities mostly through its unpredictability. You must

always plan for the 'what if 'what if I eat more' 'what if toilet facilities are not available' 'what if I cannot break away.' It leaves you feeling 'dirty or unclean' and inhibits social mixing and sexual activity. IBS is frustrating. And that's the bottom line..." IBS study participant.

For patients with chronic symptoms, the psychological and social ramifications of their illness are often more important than the physical impairment. Three over-riding themes seem to dominate the experience of living with moderate to severe FGID: (1) a sense of frustration, (2) a sense of isolation, and (3) search for a niche in the health/sick role continuum/dissatisfaction with the medical system.^{1–4} The effects of IBS on quality of life (QoL) often are underestimated. Patients with mild to moderate disease severity report that IBS restricts daily activities on average 73 days per year (20%); resulting in loss of work (13% of patients).⁵

There is often a disconnect between patients' and physicians' views of the IBS experience, regarding perceptions of etiology, severity, treatment approaches, and efficacy.^{6–8} When 1014 patients and 508 physicians used identical scales to rate IBS-related pain and discomfort, responses showed that physicians rated discomfort as significantly less severe than patients.⁹ Conversely, 35% of more than a 1000 IBS patients in an international survey, reported their symptoms as severe. In the same survey, to receive a treatment that would make them symptom free, patients would give up 25% of their remaining life (average, 15 y) and 14% would risk a 1 in 1000 chance of death.⁵ Many patients are reluctant to accept the functional diagnosis and many misconceptions, for example, that anxiety, depression, and diet cause IBS, and fear that IBS leads to cancer.^{7,8} Such misconceptions likely affect clinical outcomes and health care utilization.

The Patient–Health Care Provider Encounter

"The biggest problem is that no one (in the medical field) treats the whole person. I feel more like I'm going to a drug

Abbreviations used in this paper: EAL, early adverse life event; FGID, functional gastrointestinal disorders; HRT, hormone replacement therapy; 5-HT, serotonin; IBS, irritable bowel syndrome; QoL, quality of life.

Most current article

© 2016 by the AGA Institute
0016-5085/\$36.00

<http://dx.doi.org/10.1053/j.gastro.2016.02.017>

dealer than someone that looks at the problem in its totality. As a result I have turned my attention to helping myself, and have had some degree of success. I wish doctors would listen to patients more when we talk about the symptoms and how they affect our daily lives," IBS study participant.

Only a small proportion ($\approx 25\%$) of IBS sufferers consult physicians.¹⁰ However, those who do, have high health care utilization.¹¹ The nature of the patient–physician relationship is complex. Factors within and outside the health care system are constantly molding patient and physician behavior. Patients feel frustrated with unsatisfactory explanations of FGIDs, which may be experienced as a denial of the legitimacy of their symptoms and perceive lack of empathy.² Conversely, physician frustration and dissatisfaction related to treating patients with FGIDs stem from a lack of understanding of the disease, limited treatment options, limited training in communication skills, increased workload, and the perception of personality characteristics of patients with IBS with psychiatric comorbidities.¹² Gastroenterologists perceive that patients with IBS require longer visits despite not being as sick as patients with other disorders that they manage⁹ and can show gender bias.¹³ Negative attitudes toward patients with IBS may form a barrier to objective patient assessment and effective physician–patient relationship building, and ultimately negatively impact clinical outcome.¹⁴ Effective communication skills can be learned and practiced and, importantly, do not increase the encounter time. Rather, effective communication skills make the process of assessment and diagnosis more efficient, improve clinical outcomes, and increase physician job satisfaction.^{15–17}

IBS can be challenging for both the physician and the patient. Patients must learn to self-manage a condition that can have a profound impact on everyday life. Health care providers can help by eliciting and addressing patient concerns; by offering a positive diagnosis and clear, understandable, and legitimizing explanations of the disorder; show empathy; and enter into a meaningful partnership that helps individuals replace feelings of helplessness with means of empowerment.

Gender

Sex refers to the biological make-up of the individual's reproductive anatomy whereas gender refers to an individual's lifestyle or personal identity. Often, these terms are used interchangeably. In this article we use *sex* to describe what is known about biological differences between males and females and *gender* to refer to what is known about behavior between men and women.

The literature on gender and health has discussed the detrimental impact of adherence to some traditional feminine gender roles on women's health and well-being.¹⁸ These include gender-related expectations, such as societal standards for attractiveness; social norms regarding women's caretaking role in relationships; and sanctions against anger expression by women. The messages women receive about gender-related expectations and the societal consequences of not measuring up to these expectations can

have health consequences.¹⁹ There are several common gender role concerns among women with IBS including shame and bodily functions, bloating and physical appearance, and pleasing others, assertion, and anger.¹⁹

One central theme that women with IBS commonly report is feelings of shame associated with losing control of bodily functions. Women are taught that bodily functions are something to be kept private and secret. One important implication of such teachings is that bowel functioning becomes a source of shame and embarrassment more so than it does for men.

The finding that women often score higher on indices of bloating and constipation also can be discussed as a gender-related theme. Society's focus on how women look (eg, thinness as a necessary standard of attractiveness)²⁰ can lead women to experience bloating not only as a source of physical discomfort, but of psychological distress as well. The physical and psychological distress that women may experience with abdominal discomfort, coupled with the perception that their pain is being minimized or trivialized by health care professionals, may lead women to respond by becoming more hypervigilant to any sign of pain or discomfort.

Women as compared with men are socialized to please others, often at the expense of their own needs. Women who express anger, make demands, or question authority are often given the label of being hysterical, have their complaints dismissed, or have their femininity called into question. Potential repercussions for women who express their own wants and needs often are sufficient to keep women silent. These social expectations of women can lead to the silencing of certain thoughts, feelings, and behaviors rather than jeopardize relationships that are in place.²¹ A study that compared women with IBS with women with inflammatory bowel disease found that women with IBS score higher on measures of self-silencing than inflammatory bowel disease patients.²¹ In another study, women reported shame in not living up to gender norm expectations for women in domains of relationships (taking care of others at the expense of their own needs), attractiveness (caused by bloating), and lack of desire to engage in sex (caused by IBS symptoms).²² Men in this study focused more on IBS symptoms impacting their paid employment and sense of control. They also found that in interactions with health care providers, women risked being trivialized and men risked being overlooked because IBS may be labeled as a women's health concern.

Gender and Social Factors

It is important to acknowledge that health and illness occur within a larger social context. The meaning and expression of illness occur against a complex backdrop of a multitude of social determinants of health. The social determinants that have been investigated in FGIDs include life stressors; history of sexual, physical, and emotional abuse; and early life experiences including gender role socialization, social support, and social factors as assessed by QoL scales.

There have been limited studies to date that have assessed gender differences in life stress related to FGIDs.²³ Although the data support a significant role for life stress in IBS, future studies will need to determine whether there are differences in the relationship between stress and FGIDs in women and men. Although stress affects the gut in most people, patients with IBS appear to experience greater reactivity to a variety of stressors.

One form of social stress that has received attention in the study of FGIDs is sexual, physical, or emotional abuse.²⁴ Table 1 shows the summary of studies focused on gender differences in history of sexual, physical and emotional abuse.^{24–28} However, most work in this area has included only women or a female-predominate sample. Because of conflicts in the literature, more research is needed to determine whether there are gender differences in history of abuse in FGIDs.

Studies also have investigated whether women and men with FGIDs differ on health-related QoL measures.²⁹ For example, in a study of referral center and primary care patients, Simren et al³⁰ found that women with IBS reported a lower QoL compared with men with IBS. Similar results were found in a Chinese outpatient population.²⁹ Dancy et al³¹ found that men and women with IBS reported similar QoL scores, as well as similar levels of symptom severity, perceived stigma, and illness intrusiveness. However, these investigators also found gender differences in the relationship among these variables. For example, among women, IBS symptom severity exerted a significant impact on QoL, whereas for men, the psychosocial impact of illness intrusiveness was greater in every domain except sexual relations. The authors suggest that these results have implications for how socialization shapes IBS-related gender differences.

Gender and Epidemiology

Most individuals with FGIDs do not seek health care and the decision to seek care introduces bias in research. This

section focuses on population-based research, which is used to fully evaluate the epidemiology and clinical symptoms in these individuals. The proposal that FGIDs may be more prevalent in women stems from a variety of sources reviewed elsewhere: studies documenting a greater prevalence of FGIDs with other chronic pain conditions that are more common in women (fibromyalgia, chronic pelvic pain), studies proposing an effect of the menstrual cycle on symptom severity, and studies suggesting that particular agents are more effective in women.

Functional Esophageal Disorders

Functional esophageal disorders are common.³² Globus sensation and rumination syndrome are reported by approximately 1 in 10 of the population,^{32–35} and are more common in women. Men with globus tend to have greater levels of somatization and depression.³³ The prevalence estimates of functional chest pain, based on self-report, vary between 12.5% and 25%,^{32,36} with an equal gender prevalence in the general population.³² There is a higher female-to-male ratio in tertiary care referral centers,³⁷ and women tend to use terms such as “burning” and “frightening” more than men.³⁸ The challenge in research studies of functional esophageal disorders is identifying those individuals who predominantly have a functional esophageal disorder rather than gastroesophageal reflux disease, which is not associated with gender difference in rates or reflux symptoms.

Functional Gastroduodenal Disorders

Functional dyspepsia affects 15%–20% of the general population³⁹ and does not vary with gender.^{39–41} Being a woman was a significant predictor of functional dyspepsia when compared with organic causes of dyspepsia.⁴² Although females have physiological evidence of delayed gastric emptying, there is little relationship between these measures and symptom severity or hormonal status.^{43,44} Adolescent girls are twice as likely to report aerophagia as

Table 1. Gender Differences of History of Sexual, Physical, and Emotional Abuse in Persons With and Without IBS

Reference	Early life events	Findings	Gender differences within group comparisons
25	Childhood abuse, sexual abuse	A history of sexual abuse was more common in women than in men, but the investigators did not differentiate between patients with or without IBS	Not addressed
26	Severe lifetime sexual trauma, severe childhood sexual abuse, lifetime sexual victimization	All of the IBS patients studied who reported a history of sexual abuse were female	Women > men
24	General trauma, physical punishment, emotional abuse, and sexual events	Significant differences were observed mainly in women with IBS; various types of early adverse life events were associated with the development of IBS, particularly among women	Women > men
27	Childhood abuse	No significant association of childhood adversity with the likelihood of developing IBS in either men or women	No differences
28	Childhood abuse	A history of child abuse was similar in case and control groups, but the investigators did not differentiate between patients with or without IBS	Not addressed

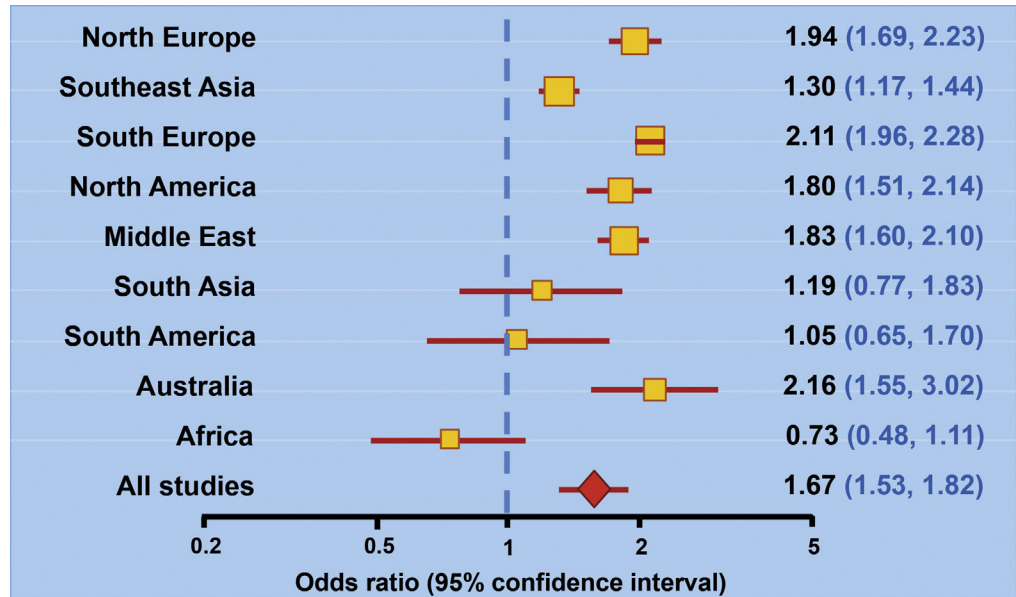


Figure 1. Odds ratio for IBS in women vs men according to geographic location. Data are grouped according to geographic region. Numerically higher ratios are reported from the Western world.⁴⁸

adolescent boys.⁴⁵ The overall prevalence of functional vomiting is 2.3%, and there is no association with gender.⁴⁶

Functional Bowel Disorders

Female-to-male ratios of IBS vary widely geographically, from 3:1 in urbanized Western populations to 1:1 in Nigeria⁴⁷ (Figure 1 and Table 2^{25,29,30,32,34-37,39,40,45-75}), but overall the prevalence of IBS internationally is 67% higher in women than in men (odds ratio, 1.67; confidence interval, 1.53-1.82).⁴⁷

In terms of symptom severity, among patients with mild symptoms (<3 Manning criteria), 65% were women, increasing to 80% in those with more severe symptoms (≥3 criteria).²⁵ Women have a more impaired QoL with IBS, with the somatic symptoms correlated to a gender-related increased prevalence of anxiety and depression.²⁵

There is a greater women-to-men predominance in non-pain-associated symptoms of constipation, bloating, and extraintestinal manifestations.⁴⁸ Women are twice as likely as men to report bloating or abdominal distention.^{66,67} Abdominal pain scores for men and women with IBS are similar; however, men report more diarrhea and women report more constipation.^{30,48,60,65} In addition, women with IBS were more likely to report bloating and nausea as well as extraintestinal symptoms compared with men.⁴⁸ There is an amplification of GI symptoms during the late luteal and early menses phases.⁷⁶

The female-to-male ratio for constipation is increased for both the outlet-type (poor pelvic muscle tone) and the combined IBS + outlet-type of functional constipation.⁷⁷ Women with functional constipation were 2 times more likely to seek medical care compared with men.^{61,62,78} As with most FGIDs, the prevalence of functional constipation and IBS constipation is lower in Asian populations, but the female preponderance is similar to Western populations.⁷⁹

Functional abdominal pain is much more common in children and adolescents than adults, and the rate of diagnosis is higher in girls than in boys.⁶⁸

Functional Disorders of the Biliary Tract and Pancreas

The prevalence of sphincter of Oddi dyskinesia is 0.8%, and is 4-5 times more common in women.^{32,55}

Functional Anorectal Disorders

Prevalence rates of fecal incontinence vary from 2% to 11%.^{64,70} Among nursing home residents, incontinence is more common in men,⁷¹ in contrast to older people living at home.⁶⁹ There is no difference in gender in functional anorectal pain.³² Pelvic floor failure is common and increases with age, and is more common in women.³²

Gender and Overlapping Functional Disorders

Patients with FGIDs often report other physical and mental comorbidities (ie, extraintestinal conditions).⁸⁰ Comorbid conditions reported by IBS patients include fibromyalgia, migraine headache, joint hypermobility syndrome, temporomandibular joint disorder, bladder pain syndrome/interstitial cystitis, anxiety, and depression.⁸¹⁻⁸³ All of these conditions have a female predominance in the general population and many have a pain component.

Among women with FGIDs a number of female-specific conditions are more common when compared with non-FGID groups. These include dysmenorrhea, endometriosis, adenomyosis, leiomyomas, pelvic floor myalgia, vulvodynia, chronic cyclic pelvic pain, dyspareunia, dysmenorrhea, and polycystic ovary syndrome. Dyspareunia and sexual functioning in women with IBS remain understudied problems.

Table 2. The Effect of Sex and Age on the Prevalence of FGID

FGID	Effect of sex	References for sex	Change with age	References for age
Esophageal Globus	F > M	32	↓	32,49
		49		
Rumination	F = M	32	↓	32
	F > M	34		
		35		
Functional chest pain	F = M	49	↓	32,49
		36		
		50		
		37		
Functional heartburn	F > M (at tertiary care)	49	=	32
	F = M	51		
		32		
Dysphagia	F > M	49	↑	32
		32		
Gastroduodenal Dyspepsia	F = M	32	↓	52
		39		
		40		
		53		
Aerophagia	M > F	32	↓	32
	F > M	54		
		45		
Functional vomiting	F = M	46	↓	46
		32		
Biliary tract	F > M	55	↑	32
		32		
Lower GI tract IBS	F > M	56	↓	32
		32		
		25		
		47		
		29		
		57		
Functional constipation	F > M	56	↑	63
		32		
		46		
		60		
		30		
		61		
		62		
Functional diarrhea	M > F	32	↓	46
		46		
		60		
		30		
		48		
		65		
Functional bloating	Discordant	32	Discordant	32
	F > M	66		
		67		
		48		
FAPS	F > M	32	↓	32
Fecal incontinence	F > M (at home)	69	↑	70
	M > F (nursing homes)	71		
Functional anorectal pain	F > M	32	↓	32
		72		
Outlet delay	F > M	73	=	72
		74		
		74		
		75		

FAPS, functional abdominal pain syndrome.

Hysterectomy is 3-fold higher in women with IBS,⁸⁴ suggesting that the overlap with gynecologic conditions may contribute to greater health care seeking and subsequent surgical intervention.

Several mechanisms may account for the comorbidity in women with FGIDs, particularly IBS. These include brain activation patterns, dysregulation of the hypothalamic-pituitary-adrenal axis, immune dysfunction, visceral and somatic pain sensitivity alterations, autonomic nervous system dysregulation, and genetic susceptibility. Because the etiology and pathophysiology of each of these conditions likely are complex and multifactorial, a single common pathogenesis has remained elusive. Other factors, including access to health care and health care-seeking behavior, also may contribute to gender differences in the diagnosis of comorbid conditions. The type, number, and duration of comorbid conditions may contribute to the toll of interpersonal stress.

Gender and Pathophysiology

Preclinical

Visceral pain perception. Under basal conditions, most studies have found that normal cycling females have a greater response than males to visceral pain stimuli.^{85,86} Genetic background clearly has a role because the strain of rodent determines which sex is more sensitive to noxious visceral stimuli.⁸⁷ Visceral pain can be enhanced by chemical irritation, inflammation, and stress. Generally, all of these insults either show no sex difference or greater pain responses in female animals than males.⁸⁵ Stress, particularly repeated stress and early life stress, also produces visceral hyperalgesia days or even months after the stress period, with female rodents being significantly more susceptible.^{88,89}

The role of sex hormones in visceral pain has received considerable attention and produced much controversy. Studying natural variations in sex hormones in female rodents is complicated by a much shorter (4–6 days) estrus cycle, with smaller changes in the plasma estrogen and progesterone levels than in women.⁹⁰ Because studies evaluating the effect of the estrus cycle in rodents have produced conflicting results,^{85,91,92} many investigators have resorted to ovariectomizing female rodents and comparing the effect of estrogen and progesterone replacement. This strategy also has resulted in conflicting observations that probably result from the time between ovariectomy and pain testing, the dose of estrogen/progesterone, and whether it was administered abruptly with a single dose or at a slow constant rate.^{85,93} The fact that estrogens can act rapidly by binding to estrogen receptors located in the plasma membrane, in addition to their slow effects mediated by gene expression,⁹⁴ may explain some of these differences.

Somatic pain perception. A great deal more preclinical work has been performed on sex differences in somatic pain in animals, with more equivocal results than visceral pain. Sex differences, if found at all, depend on the specific modality being tested (thermal, mechanical,

chemical, electrical), the location or dermatome involved, and the experimental model (acute, neuropathic, ischemic, inflammatory pain).⁹⁵ Again genetic background seems to play an important role in determining which sex is more sensitive because different strains of mice and rats can produce opposite effects using the same pain test.⁹⁵ The role of specific receptors and gene polymorphisms in sex-specific visceral and somatic pain responses is accumulating.^{86,92}

Motility and permeability. Both estrogen and to a lesser extent progesterone affect GI motility and colonic permeability.⁹² Treatment of ovariectomized rats with a combination of estrogen and progesterone results in slower colonic transit,⁹⁶ possibly mediated by effects on nitric oxide-containing neurons in the myenteric plexus⁹⁷ and the number and function of mast cells in GI mucosa.⁹⁸ In addition, stress has a greater effect on decreasing upper GI motility and increasing lower GI motility in female compared with male animals.^{99,100} This effect likely is mediated by corticotropin-releasing factor receptor-1, which is potentiated by estrogen and expressed by colonic myenteric neurons.¹⁰¹ Estrogen also contributes to the maintenance of the intestinal barrier that serves an important role in the body's defense against pathogens. The positive role of estrogen in maintaining intestinal barrier function may be through maintenance of tight junctions and/or influence on inflammatory response.¹⁰²

Clinical

Abdominal symptoms. In the general population, women are more likely to report abdominal pain and pain-related IBS diagnostic symptoms (eg, pain relieved by defecation), whereas in the IBS population, the prevalence of pain-related symptoms does not vary by gender. In addition, women with IBS report more constipation, straining, bloating, and abdominal distention, and men with IBS report more diarrhea-related symptoms, including increased stool frequency.¹⁰³

Visceral pain perception. There are no conclusive data to suggest that gender influences visceral pain perception or the referral of pain to GI stimulation in healthy and FGID subjects.^{104–108} Women, however, are more likely to show increased sensitivity after repetitive sigmoid distention than men with IBS.^{107,109} Reasons for inconsistencies across studies may include study design, small subject numbers and techniques, ovarian hormone and receptor levels, and/or stress levels, mood, vigilance, and early life and social factors.

Somatic pain perception. Studies suggest that healthy women tend to show greater somatic pain sensitivity than men.⁸⁶ In FGIDs, studies are scarce, with only one study in IBS suggesting that thermal sensitivity does not differ between sexes.¹¹⁰ Variability between studies is probably for similar reasons discussed for visceral pain perception.

Motility. Esophageal anatomy and innervation do not appear to differ significantly by gender, and only minor gender-specific differences have been reported in esophageal motor function.¹¹¹ Slower gastric emptying rates of both solids and liquids have been shown in females

compared with males.^{112–116} Postprandial proximal gastric relaxation was prolonged and perception scores increased in women compared with men.¹¹⁷ Studies have found colon transit times to be shorter in men than women, particularly in the right colon.^{118–120} Rao et al,¹²¹ using ambulatory 24-hour colonic manometry, found pressure activity in the colon of healthy women to be reduced compared with age-matched men. The phase of menstrual cycle was not controlled in these studies. There are no published nondrug studies comparing colonic motility in women and men with IBS. Anal sphincter pressures, anal pressures during maximum sphincter contraction, and volumes required to induce a desire to defecate have been reported to be lower in women.^{122,123}

Cardioautonomic tone. Autonomic nervous system dysfunction has been reported in patients with IBS.¹²⁴ However, few studies have evaluated gender differences in measures of autonomic function other than GI motility in persons with IBS. Cheng et al¹²⁵ reported significant blunting of the autonomic nervous system response to flexible sigmoidoscopy (a visceral stressor) in patients with IBS compared with controls, and that, overall, women had higher cardiovagal tone and lower cardiosympathetic balance compared with men.

Central processing of visceral stimuli. *Healthy subjects.* By using functional magnetic resonance imaging, Kern et al¹²⁶ showed greater response to rectal distension in sensory and affective regions (dorsal anterior cingulate cortex, prefrontal cortex, and insula cortex) in females compared with males. In contrast, Berman et al¹²⁷ found a trend for greater activation of the insula and anterior and midcingulate cortex to rectal distension in men compared with women. A more recent functional magnetic resonance imaging study reported greater activity in the dorsolateral prefrontal cortex and middle temporal gyrus during anticipation of rectal pain, and in the cerebellum and medial frontal gyrus during painful rectal stimulation in women compared with men.¹²⁸ Although a study using magnetoencephalography while recording cortical evoked potential to painful esophageal stimulation reported no sex difference,¹²⁹ sex differences in brain response to esophageal pain have been observed.¹³⁰ Despite no significant differences in psychophysiological factors known to influence brain processing, such as anxiety, personality type, autonomic response to pain, and pain perception levels and thresholds, women compared with men showed a greater decrease in amygdala activity during anticipation of esophageal pain and a greater increase in midcingulate cortex and anterior insula activity during esophageal pain.¹³⁰ These observations were interpreted as women having greater engagement of cognitive coping strategies to the anticipation of visceral pain, and greater emotional response during actual esophageal pain.¹²⁹

FGID subjects. Initial brain imaging studies using rectal balloon distension in IBS patients found that male patients showed greater activation of the insula compared with female patients,^{131,132} as well as dorsolateral prefrontal cortex and dorsal pons/periaqueductal gray.¹³² In contrast, female IBS patients showed greater activation of the

ventromedial prefrontal cortex, right anterior cingulate cortex, and left amygdala compared with male patients.¹³² These data suggest that female patients have greater activation of affective and autonomic regions, whereas male patients show a greater activation of regions in the corticolimbic pain inhibition system. A follow-up study using connectivity modeling of the same data suggested that the differences between men and women mainly are owing to differences in the effective connectivity of emotional arousal circuitry rather than visceral afferent processing circuitry (Figure 2).¹³³

More recent neuroimaging studies have shown brain activity/connectivity differences between men and women, even in the absence of a noxious stimulus (eg, rectal distension). Female IBS patients have shown higher frequency power of the insula compared with male patients.¹³⁴ Although sex differences were seen in healthy controls in the resting state, oscillatory dynamics of emotional arousal regions (amygdala and hippocampus) were exaggerated in IBS patients, mainly owing to an increased high-frequency power in female patients.¹³⁴ Furthermore, sex differences in the resting state oscillatory dynamics of sensorimotor regions seen in healthy subjects (greater low-frequency power in men) were reversed in IBS patients, with greater low-frequency power in women.¹³⁴ A second resting state study showed sex differences in the functional connectivity between the dorsal anterior insula and medial prefrontal cortex and precuneus in patients with IBS are similar to healthy subjects, but more enhanced.¹³⁵ These findings may relate to females dedicating more resource allocation to interoceptive awareness, whereas males rely more on cognitive processes, with IBS placing further stress on this bias. Finally, sex differences in the impact of early adverse life events (EALs) on resting state brain connectivity has been shown in IBS patients.¹³⁶ EAL scores were associated with greater connectivity of thalamus, insula, anterior cingulate cortex, and middle temporal gyrus with the cerebellar network in men only. The cerebellar network is involved in fear perception, motor function, and visual-motor learning, as well as physical and psychological pain. The functional consequences of these sex-specific alterations in cerebellar network alterations remain unknown.

Sex differences in structural changes of the brain in patients with IBS also have been shown. Female patients have shown significantly less cortical thickness in the right subgenual anterior cingulate cortex than male patients.¹³⁷ Moreover, using diffusion tensor imaging, reduced integrity of sensorimotor and descending pain modulation pathways has been shown in female compared with male IBS patients. Such differences were not seen in healthy subjects.¹³⁸

Genetics and immunologic/microbiome. Multiple factors including genetics, the environment, sex hormones, and the gut microbiota may modulate the immunologic response to inflammation and infection.⁸⁸ Our understanding of the role of inflammatory factors in FGIDs and genetics, especially IBS, is increasing rapidly. The use of new-omics approaches will need to consider sex as a potential factor in terms of understanding new metabolomics and

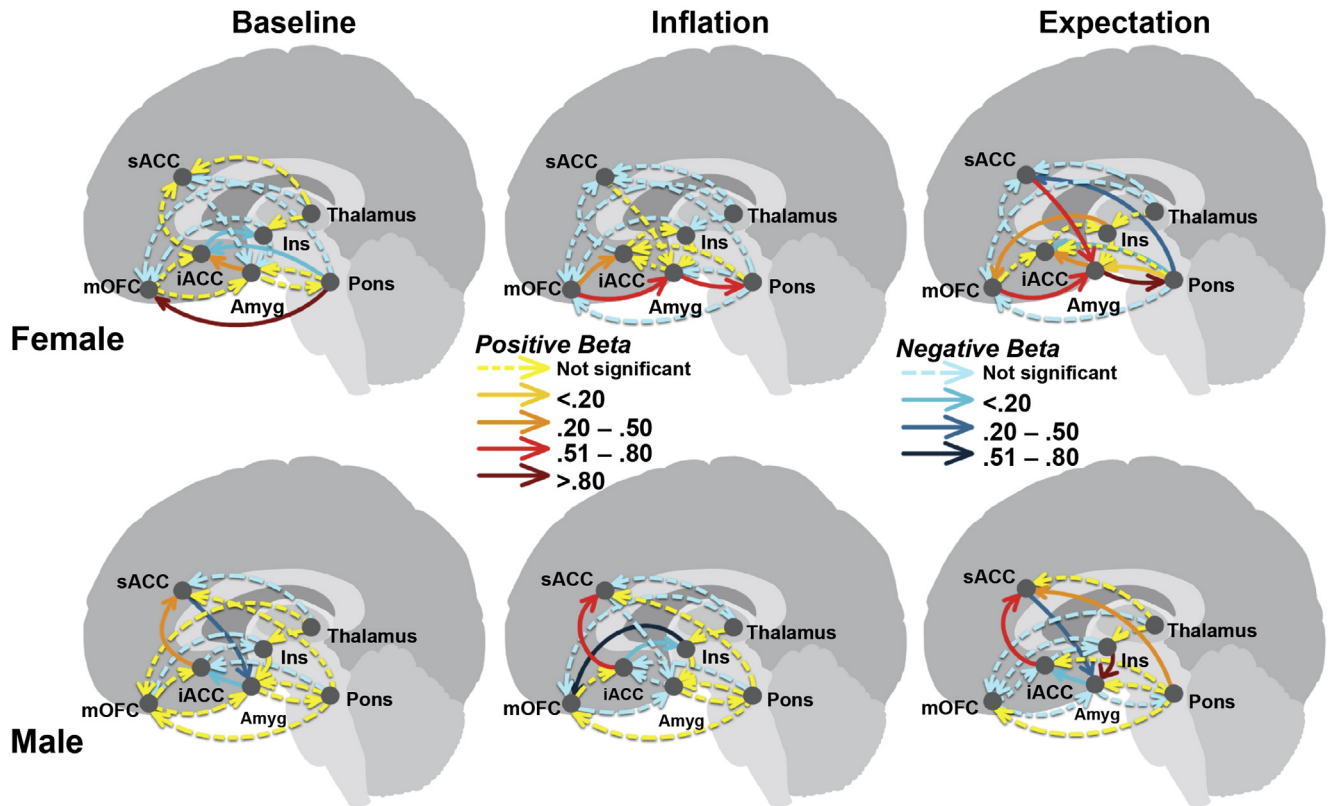


Figure 2. Estimated effective conductivity differences between men and women in proposed network comprising the homeostatic-afferent, emotional-arousal, and cortical-modulatory circuits. The operation of the proposed network (as estimated by the completely unconstrained model) during baseline, inflation, and expectation (columns) is presented for females (top rows) and males (bottom rows). The β coefficients (effective connectivity) are shown by the thickness and color of the arrows. Solid arrows represent a parameter estimate that was considered significantly different from zero, whereas dashed lines represent nonsignificant coefficients. Amyg, amygdala; INS, insula; mOFC, medial orbital frontal cortex; sACC, supra-genual anterior cingulate cortex.

transcriptomics findings. Further research is needed to clarify the potential relevance of these factors in immune system dysregulation and FGIDs.

Emerging evidence suggests that interactions between gut microbiota and altered immune function may play a role in the pathogenesis of IBS, and several studies have supported the importance of immune activation in the pathophysiology of postinfectious IBS.¹³⁹ Female gender in both adults and children has been reported as a risk factor for developing IBS symptoms after infectious gastroenteritis.^{140,141} The gut bacteria are modulated by sex steroid hormones, in particular estrogen. In addition, gut bacteria can influence the metabolism of estrogen (Figure 3).¹⁴² Flak et al¹⁴³ proposed the concept of “microgenderome,” the bidirectional interaction between sex hormones and the microbiota.

Gender and Treatment Response

Clinical Assessment

The clinical implications of gender are relevant in both the diagnosis and clinical management of FGIDs. Beginning with the history, IBS-like symptoms often are present in gynecologic conditions, the most serious of which are

ovarian and endometrial cancer, and should be included in the initial differential diagnosis. Asking the patient when symptoms started may provide important information about etiology and subsequent approaches to management. There are history and examination features unique to women: menstrual history, gynecologic surgery, and bimanual pelvic examination. The comorbidity of IBS with gynecologic pain conditions and pelvic floor dysfunction warrants careful examination. In the differential diagnosis, clinicians should avoid mistakenly using the gender prevalence to influence a premature diagnosis of a FGID.

Psychological Treatment

Whether gender makes a difference to outcomes with psychological therapy is unclear because women outnumber men in most FGID treatment trials.¹⁴⁴ These trials have not been powered sufficiently or included subanalyses to determine whether or not there is a differential response to treatment between genders.^{145,146}

There is no gender bias in outcomes with cognitive behavioral therapy, psychological therapy, or emotional awareness training for IBS,¹⁴⁷ and gender was not selected into a predictive model of treatment response. By contrast,

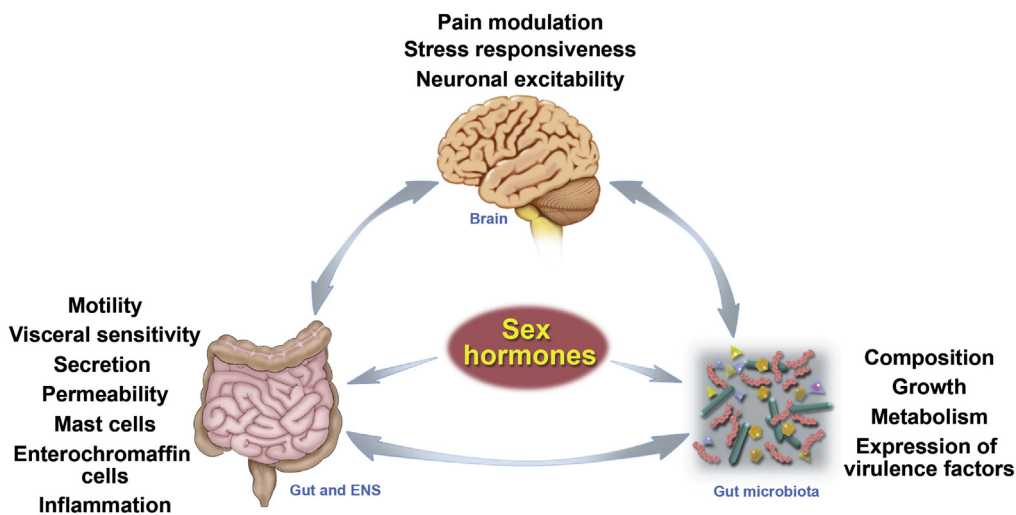


Figure 3. Sex hormones in the mutual brain–gut–microbiota interactions. Sex hormones influence peripheral and central regulatory mechanisms involved in the pathophysiology of IBS, contributing to the alterations in stress response, visceral sensitivity and motility, intestinal barrier function, and immune activation of intestinal mucosa. Sex hormones also have a direct effect on the gut microbiota, enteric nervous system.

Guthrie et al¹⁴⁸ reported minor advantages for women in response to therapy compared with men, but gender was not selected in their final analysis model. For individual psychotherapy in patients with functional dyspepsia and severe IBS,¹⁴⁹ efficacy is similar to selective serotonin reuptake inhibitor therapy with no gender difference in outcome with either treatment.

Two evaluations of hypnotherapy^{150,151} provided contrasting results with respect to gender. An audit of 1000 IBS patients who met Rome II criteria (80% female) for IBS and underwent hypnotherapy for 3 months found that 80% of women improved compared with 62% of men.¹⁵¹ A study of 250 participants noted a poor response in men with IBS with diarrhea.¹⁵⁰ By contrast, a randomized controlled trial,¹⁵¹ albeit in a smaller population, showed that gender, age, disease duration, and IBS type had no influence on the long-term success of hypnotherapy.

Pharmacologic Treatment

Psychotropic agents. A recent systematic review of antidepressant therapy identified that most studies did not conduct separate analyses by gender.¹⁴⁶

Gut-directed agents. A number of small, variable-quality studies have been subject to meta-analysis¹⁵² and shown modest benefits over placebo for fiber, anticholinergics, and peppermint oil, but no separate analysis of gender difference was undertaken.

Therapies targeted at serotonin/5-hydroxytryptamine (5-HT) receptors in the gut seem to have a differential effect in men and women. Alosetron, a 5-HT₃ antagonist, provided more robust efficacy in women than men at the same dose.¹⁵³ The basis for this gender difference is not clearly established. Alosetron is more effective in slowing colonic transit,¹⁵⁴ attenuating the gastrocolonic response, and increasing rectal compliance¹⁵⁵ in women than men.

Three large series¹⁵⁶ of prucalopride, a highly selective 5HT₄ agonist, recruited 85% female patients and showed equal efficacy in both sexes. For other drugs commonly used to treat motility disturbance (domperidone, opioid-based

constipating agents, laxatives, probiotics), there is no evidence of a gender-related difference in efficacy.¹⁵⁷

Most medications for FGIDs are cleared through the cytochrome P450 pathway, which can be affected by female sex hormones. Although women clear drugs more quickly than men through this pathway, this is balanced by the difference in body size and adiposity of women. There have been no clinically significant differences in the pharmacokinetics of FGID drugs, and, hence, dosages need not be adapted by gender.

Life Stages and Aging

The FGIDs affect people across the spectrum of age. Some FGIDs increase with age whereas others decrease. Some begin in childhood whereas others start after developmental stages including puberty and menopause. The trajectory of many FGIDs are unknown owing to lack of long-term follow-up evaluation. Cohort studies with pre-identified clinical and biological markers may yield important information about the normal GI tract aging in concert with the evolution and progression of FGIDs.

Extensive epidemiologic data exist for IBS, dyspepsia, heartburn, constipation, and fecal incontinence, but less is known about the other FGIDs. The presence of FGIDs in children is well recognized. The exact age of onset of FGIDs remains to be determined. A link between childhood IBS and adult IBS remains to be established.

Both laboratory animal and human data indicate that EALs may contribute to either increased visceral sensitivity later in life and/or potentially visceral and somatic conditions.²⁴ Although EALs result in higher rates of IBS in both genders, women appear to be more susceptible to the development of pathologies after exposure to EALs.⁸⁹

Approximately 70%–95% of women report heartburn, nausea, or vomiting during their pregnancies. Most episodes of heartburn occur during the first and second trimesters.

Perimenopause is defined as the period of transition to menopause. In a cross-sectional study of premenopausal and postmenopausal women with IBS, there were more GI

symptoms in early postmenopausal women compared with premenopausal women.¹⁵⁸ Menopause is the cessation of a woman's reproductive ability. Understanding the effects of menopause on FGIDs is confounded by the effects of aging, the presence of comorbid conditions, and medication use (ie, hormone-replacement use [HRT]). In one study using the General Practice Research Database in the United Kingdom, investigators found that current and past users of HRT had an increased risk (incidence, 1.7 in nonusers and 3.8 among users) of IBS compared with nonusers.¹⁵⁹

Overall, the prevalence of IBS decreases with age in both men and women.¹⁶⁰ The existing literature is discordant with regard to the changes in the estimates of bloating by age.³² Most studies have found that the prevalence of constipation increases with advancing age.^{63,64,161} Less is known regarding functional diarrhea, although one study identified decreasing rates of diarrhea with age.⁴⁶

There is some evidence to suggest that with aging there is reduced biodiversity. However, it is difficult to separate out changes that are related to aging, per se, or lifestyle, history of antibiotic treatment, hospitalization, and frailty. Reductions in fiber intake caused by poor dentition, decreased saliva production, and reduced economic resources also may contribute to age-related changes in microbiota composition.

Fecal incontinence has been studied extensively and increases with age. Data from the Nurse's Health Study show that 4% of women age 62–87 have fecal incontinence and 7% have both urinary and bowel incontinence.¹⁶²

Methodologic Issues in FGIDs

As a result of methodologic issues limiting interpretation of studies, there remain many unanswered questions concerning gender, age, and patient perspectives in FGIDs. Because of the female predominance and greater likelihood of women to participate in research studies, there are insufficient numbers of male participants to make meaningful interpretations and adequately assess gender and sex differences in psychological, physiological, and treatment studies. Given the intersection of gender and socioeconomic factors in women's health, the environment, relationships, and resources (eg, socioeconomic status) need to be considered when assessing gender differences. Another major methodologic concern is that most studies use a cross-sectional design, which limits the more comprehensive understanding of the pathogenesis, development, course, and impact of these disorders in men and women.

Many physiologic studies use relatively small sample sizes and do not account for psychosocial variables, overlapping FGID or comorbidities, abuse history, or EALs, and, therefore, may not apply to the general patient population. These studies may be influenced by the selection bias of participants who are willing to undergo invasive research protocols.

Translating the various mechanisms of pain and GI function from animal studies to human beings is challenging. Differences in the type and strain of the animal

model and type of stressor, if used, need to be taken into account when interpreting these studies.

Similarly for women, the menstrual cycle needs to be considered in studies. In most studies, menstrual phase is frequently not determined, or is assessed by the count forward/backward method and not by measuring the luteinizing hormone surge or ovarian hormone levels to assess the follicular and luteal phases more accurately. Other confounding methodologic issues include the use of oral contraceptive agents, HRT, and premenopausal vs postmenopausal status in women. The impact of the transition from a premenopausal to perimenopausal state to menopause remains unknown.

Most studies examining psychological factors have focused on anxiety and depression and, to a lesser extent, personality traits. Other aspects of psychological functioning such as quality of relationships, social support, health perceptions, traumatic and stressful events, and effects of childhood experience other than abuse largely have been ignored in studies comparing men and women.

Adequate sample sizes of each gender, particularly men, and comparable treatment doses must be obtained to determine if men and women respond similarly to treatment. There may be gender bias in the placebo response. Patients for clinical trials generally are recruited from specialty practices where women are more likely to be referred than men, thus compounding problems of selection bias.

Future studies will need to have adequate numbers of men with gender-related variables such as history of EALs, abuse, anxiety, or depression.¹⁹ At the same time, greater attention needs to be given to transgender men and women.

In summary, this review emphasizes: (1) the importance of the patient's experience and perspective, (2) the influence of society, culture, gender, and age on all aspect of the individual's experience, (3) the influential role of an individual's sex on the biologic and physiologic processes of brain-gut interactions, and (4) the potential of the health care provider in influencing patient outcomes.

Supplementary Material

Note: The first 50 references associated with this article are available below in print. The remaining references accompanying this article are available online only with the electronic version of the article. To access the supplementary material accompanying this article, visit the online version of *Gastroenterology* at www.gastrojournal.org, and at <http://dx.doi.org/10.1053/j.gastro.2016.02.017>.

References (see Supplementary References)

1. Bertram S, Kurland M, Lydick E, et al. The patient's perspective of irritable bowel syndrome. *J Fam Pract* 2001;50:521–525.
2. Drossman DA, Chang L, Schneck S, et al. A focus group assessment of patient perspectives on irritable bowel syndrome and illness severity. *Dig Dis Sci* 2009; 54:1532–1541.

3. Halpert A, Dalton CB, Palsson O, et al. Irritable bowel syndrome patients' ideal expectations and recent experiences with healthcare providers: a national survey. *Dig Dis Sci* 2010;55:375–383.
4. Halpert A, Godena E. Irritable bowel syndrome patients' perspectives on their relationships with healthcare providers. *Scand J Gastroenterol* 2011;46:823–830.
5. Drossman DA, Morris CB, Schneck S, et al. International survey of patients with IBS: symptom features and their severity, health status, treatments, and risk taking to achieve clinical benefit. *J Clin Gastroenterol* 2009;43:541–550.
6. Heitkemper M, Carter E, Ameen V, et al. Women with irritable bowel syndrome: differences in patients' and physicians' perceptions. *Gastroenterol Nurs* 2002;25:192–200.
7. Halpert A, Dalton CB, Palsson O, et al. What patients know about irritable bowel syndrome (IBS) and what they would like to know. National Survey on Patient Educational Needs in IBS and development and validation of the Patient Educational Needs Questionnaire (PEQ). *Am J Gastroenterol* 2007;102:1972–1982.
8. Lacy BE, Weiser K, Noddin L, et al. Irritable bowel syndrome: patients' attitudes, concerns and level of knowledge. *Aliment Pharmacol Ther* 2007;25:1329–1341.
9. Lacy BE, Rosemore J, Robertson D, et al. Physicians' attitudes and practices in the evaluation and treatment of irritable bowel syndrome. *Scand J Gastroenterol* 2006;41:892–902.
10. Hungin AP, Chang L, Locke GR, et al. Irritable bowel syndrome in the United States: prevalence, symptom patterns and impact. *Aliment Pharmacol Ther* 2005;21:1365–1375.
11. Longstreth GF, Wilson A, Knight K, et al. Irritable bowel syndrome, health care use, and costs: a U.S. managed care perspective. *Am J Gastroenterol* 2003;98:600–607.
12. Dixon-Woods M, Critchley S. Medical and lay views of irritable bowel syndrome. *Fam Pract* 2000;17:108–113.
13. Hamberg K, Risberg G, Johansson EE. Male and female physicians show different patterns of gender bias: a paper-case study of management of irritable bowel syndrome. *Scand J Public Health* 2004;32:144–152.
14. Raine R, Carter S, Sensky T, et al. General practitioners' perceptions of chronic fatigue syndrome and beliefs about its management, compared with irritable bowel syndrome: qualitative study. *BMJ* 2004;328:1354–1357.
15. Kaptchuk TJ, Kelley JM, Conboy LA, et al. Components of placebo effect: randomised controlled trial in patients with irritable bowel syndrome. *BMJ* 2008;336:999–1003.
16. Conboy LA, Macklin E, Kelley J, et al. Which patients improve: characteristics increasing sensitivity to a supportive patient-practitioner relationship. *Soc Sci Med* 2010;70:479–484.
17. Dhaliwal SK, Hunt RH. Doctor-patient interaction for irritable bowel syndrome in primary care: a systematic perspective. *Eur J Gastroenterol Hepatol* 2004;16:1161–1166.
18. Worell J, Remer P. *Feminist perspectives in therapy: empowering diverse women*. Hoboken, NJ: John Wiley & Sons, 2003.
19. Toner BB, Akman D. Gender role and irritable bowel syndrome: literature review and hypothesis. *Am J Gastroenterol* 2000;95:11–16.
20. Cheney AM. Most girls want to be skinny: body (dis) satisfaction among ethnically diverse women. *Qual Health Res* 2011;21:1347–1359.
21. Ali A, Toner BB, Stuckless N, et al. Emotional abuse, self-blame, and self-silencing in women with irritable bowel syndrome. *Psychosom Med* 2000;62:76–82.
22. Bjorkman I, Dellenborg L, Ringstrom G, et al. The gendered impact of irritable bowel syndrome: a qualitative study of patients' experiences. *J Adv Nurs* 2014;70:1334–1343.
23. Maguen S, Madden E, Cohen B, et al. Association of mental health problems with gastrointestinal disorders in Iraq and Afghanistan veterans. *Depress Anxiety* 2014;31:160–165.
24. Bradford K, Shih W, Vidlock EJ, et al. Association between early adverse life events and irritable bowel syndrome. *Clin Gastroenterol Hepatol* 2012;10:385–390. e1-3.
25. Longstreth GF, Wolde-Tsadiq G. Irritable bowel-type symptoms in HMO examinees. Prevalence, demographics, and clinical correlates. *Dig Dis Sci* 1993;38:1581–1589.
26. Walker EA, Katon WJ, Roy-Byrne PP, et al. Histories of sexual victimization in patients with irritable bowel syndrome or inflammatory bowel disease. *Am J Psychiatry* 1993;150:1502–1506.
27. Goodwin L, White PD, Hotopf M, et al. Life course study of the etiology of self-reported irritable bowel syndrome in the 1958 British birth cohort. *Psychosom Med* 2013;75:202–210.
28. Jones MP, Oudenhove LV, Koloski N, et al. Early life factors initiate a 'vicious circle' of affective and gastrointestinal symptoms: a longitudinal study. *United European Gastroenterol J* 2013;1:394–402.
29. Tang YR, Yang WW, Wang YL, et al. Sex differences in the symptoms and psychological factors that influence quality of life in patients with irritable bowel syndrome. *Eur J Gastroenterol Hepatol* 2012;24:702–707.
30. Simren M, Abrahamsson H, Svedlund J, et al. Quality of life in patients with irritable bowel syndrome seen in referral centers versus primary care: the impact of gender and predominant bowel pattern. *Scand J Gastroenterol* 2001;36:545–552.
31. Dancey C, Hutton-Young S, Moye S, et al. Perceived stigma, illness intrusiveness and quality of life in men and women with irritable bowel syndrome. *Psychol Health Med* 2002;7:381–395.
32. Drossman DA, Li Z, Andruzzi E, et al. U.S. householder survey of functional gastrointestinal disorders. Prevalence, sociodemography, and health impact. *Dig Dis Sci* 1993;38:1569–1580.
33. Gale CR, Wilson JA, Deary IJ. Globus sensation and psychopathology in men: the Vietnam experience study. *Psychosom Med* 2009;71:1026–1031.
34. Chial HJ, Camilleri M, Williams DE, et al. Rumination syndrome in children and adolescents: diagnosis, treatment, and prognosis. *Pediatrics* 2003;111:158–162.
35. Tack J, Talley NJ, Camilleri M, et al. Functional gastroduodenal disorders. *Gastroenterology* 2006;130:1466–1479.

36. Fass R, Achem SR. Noncardiac chest pain: epidemiology, natural course and pathogenesis. *J Neurogastroenterol Motil* 2011;17:110–123.
37. Cormier LE, Katon W, Russo J, et al. Chest pain with negative cardiac diagnostic studies. Relationship to psychiatric illness. *J Nerv Ment Dis* 1988;176:351–358.
38. Mousavi S, Tosi J, Eskandarian R, et al. Role of clinical presentation in diagnosing reflux-related non-cardiac chest pain. *J Gastroenterol Hepatol* 2007;22:218–221.
39. Aro P, Talley NJ, Ronkainen J, et al. Anxiety is associated with uninvestigated and functional dyspepsia (Rome III criteria) in a Swedish population-based study. *Gastroenterology* 2009;137:94–100.
40. Zagari RM, Law GR, Fuccio L, et al. Epidemiology of functional dyspepsia and subgroups in the Italian general population: an endoscopic study. *Gastroenterology* 2010;138:1302–1311.
41. Talley NJ, Zinsmeister AR, Schleck CD, et al. Dyspepsia and dyspepsia subgroups: a population-based study. *Gastroenterology* 1992;102:1259–1268.
42. Stanghellini V, Tosetti C, Paternico A, et al. Risk indicators of delayed gastric emptying of solids in patients with functional dyspepsia. *Gastroenterology* 1996;110:1036–1042.
43. Talley NJ, Locke GR 3rd, Lahr BD, et al. Functional dyspepsia, delayed gastric emptying, and impaired quality of life. *Gut* 2006;55:933–939.
44. Strid H, Norstrom M, Sjoberg J, et al. Impact of sex and psychological factors on the water loading test in functional dyspepsia. *Scand J Gastroenterol* 2001;36:725–730.
45. Sagawa T, Okamura S, Kakizaki S, et al. Functional gastrointestinal disorders in adolescents and quality of school life. *J Gastroenterol Hepatol* 2013;28:285–290.
46. Agreus L, Svardsudd K, Nyren O, et al. The epidemiology of abdominal symptoms: prevalence and demographic characteristics in a Swedish adult population. A report from the Abdominal Symptom Study. *Scand J Gastroenterol* 1994;29:102–109.
47. Canavan C, West J, Card T. The epidemiology of irritable bowel syndrome. *Clin Epidemiol* 2014;6:71–80.
48. Lovell RM, Ford AC. Effect of gender on prevalence of irritable bowel syndrome in the community: systematic review and meta-analysis. *Am J Gastroenterol* 2012;107:991–1000.
49. Locke GR 3rd. The epidemiology of functional gastrointestinal disorders in North America. *Gastroenterol Clin North Am* 1996;25:1–19.
50. Farmer AD, Coen SJ, Kano M, et al. Psychophysiological responses to visceral and somatic pain in functional chest pain identify clinically relevant pain clusters. *Neurogastroenterol Motil* 2014;26:139–148.

Reprint requests

Address requests for reprints to: Lesley A. Houghton, PhD, FRSB, RFF, FACC, AGAF, Division of Gastroenterology and Hepatology, Mayo Clinic, 4500 San Pablo Road, Jacksonville, Florida 32224. e-mail: Houghton.Lesley@mayo.edu; fax: (904) 953-7366.

Conflicts of interest

These authors disclose the following: Lesley Houghton has consulted over the past 12 months for GSK and Pfizer; Michael Crowell has consulted over the past 12 months for EndoStim, Inc, Medtronic, Inc, and Salix; and Albena Halpert has consulted over the past 12 months for Allergan.

Supplementary References

51. Ronkainen J, Agreus L. Epidemiology of reflux symptoms and GORD. *Best Pract Res Clin Gastroenterol* 2013;27:325–337.
52. Jones LA, Chin LT, Longo DL, et al. Peripheral clonal elimination of functional T cells. *Science* 1990;250:1726–1729.
53. Kay L, Jorgensen T. Epidemiology of upper dyspepsia in a random population. Prevalence, incidence, natural history, and risk factors. *Scand J Gastroenterol* 1994;29:2–6.
54. Chitkara DK, Bredenoord AJ, Rucker MJ, et al. Aerophagia in adults: a comparison with functional dyspepsia. *Aliment Pharmacol Ther* 2005;22:855–858.
55. Heetun ZS, Zeb F, Cullen G, et al. Biliary sphincter of Oddi dysfunction: response rates after ERCP and sphincterotomy in a 5-year ERCP series and proposal for new practical guidelines. *Eur J Gastroenterol Hepatol* 2011;23:327–333.
56. Sandler RS. Epidemiology of irritable bowel syndrome in the United States. *Gastroenterology* 1990;99:409–415.
57. Keshteli AH, Dehestani B, Daghighzadeh H, et al. Epidemiological features of irritable bowel syndrome and its subtypes among Iranian adults. *Ann Gastroenterol* 2015;28:253–258.
58. Talley NJ, Fleming KC, Evans JM, et al. Constipation in an elderly community: a study of prevalence and potential risk factors. *Am J Gastroenterol* 1996;91:19–25.
59. Bennett G, Talley NJ. Irritable bowel syndrome in the elderly. *Best Pract Res Clin Gastroenterol* 2002;16:63–76.
60. Talley NJ, Boyce P, Jones M. Identification of distinct upper and lower gastrointestinal symptom groupings in an urban population. *Gut* 1998;42:690–695.
61. Garrigues V, Galvez C, Ortiz V, et al. Prevalence of constipation: agreement among several criteria and evaluation of the diagnostic accuracy of qualifying symptoms and self-reported definition in a population-based survey in Spain. *Am J Epidemiol* 2004;159:520–526.
62. Choung RS, Branda ME, Chitkara D, et al. Longitudinal direct medical costs associated with constipation in women. *Aliment Pharmacol Ther* 2011;33:251–260.
63. Wong ML, Wee S, Pin CH, et al. Sociodemographic and lifestyle factors associated with constipation in an elderly Asian community. *Am J Gastroenterol* 1999;94:1283–1291.
64. Chen GD, Hu SW, Chen YC, et al. Prevalence and correlations of anal incontinence and constipation in Taiwanese women. *Neurourol Urodyn* 2003;22:664–669.
65. Muller-Lissner S. *Epidemiology of irritable bowel syndrome in irritable bowel syndrome: diagnosis and clinical management*. Hoboken, NJ: Wiley-Blackwell, 2013.
66. Jiang X, Locke GR 3rd, Choung RS, et al. Prevalence and risk factors for abdominal bloating and visible distention: a population-based study. *Gut* 2008;57:756–763.
67. Schmulson M, Adeyemo M, Gutierrez-Reyes G, et al. Differences in gastrointestinal symptoms according to gender in Rome II positive IBS and dyspepsia in a Latin American population. *Am J Gastroenterol* 2010;105:925–932.
68. Walker LS, Sherman AL, Bruehl S, et al. Functional abdominal pain patient subtypes in childhood predict functional gastrointestinal disorders with chronic pain and psychiatric comorbidities in adolescence and adulthood. *Pain* 2012;153:1798–1806.
69. Edwards NI, Jones D. The prevalence of faecal incontinence in older people living at home. *Age Ageing* 2001;30:503–507.
70. Rizk DE, Hassan MY, Shaheen H, et al. The prevalence and determinants of health care-seeking behavior for fecal incontinence in multiparous United Arab Emirates females. *Dis Colon Rectum* 2001;44:1850–1856.
71. Nelson R, Furner S, Jesudason V. Fecal incontinence in Wisconsin nursing homes: prevalence and associations. *Dis Colon Rectum* 1998;41:1226–1229.
72. Talley NJ, Weaver AL, Zinsmeister AR, et al. Functional constipation and outlet delay: a population-based study. *Gastroenterology* 1993;105:781–790.
73. Stewart WF, Liberman JN, Sandler RS, et al. Epidemiology of constipation (EPOC) study in the United States: relation of clinical subtypes to sociodemographic features. *Am J Gastroenterol* 1999;94:3530–3540.
74. Sung VW, Hampton BS. Epidemiology of pelvic floor dysfunction. *Obstet Gynecol Clin North Am* 2009;36:421–443.
75. Bitti GT, Argiolas GM, Ballicu N, et al. Pelvic floor failure: MR imaging evaluation of anatomic and functional abnormalities. *Radiographics* 2014;34:429–448.
76. Heitkemper MM, Cain KC, Jarrett ME, et al. Symptoms across the menstrual cycle in women with irritable bowel syndrome. *Am J Gastroenterol* 2003;98:420–430.
77. Siproudhis L, Pigot F, Godeberge P, et al. Defecation disorders: a French population survey. *Dis Colon Rectum* 2006;49:219–227.
78. Pare P, Ferrazzi S, Thompson WG, et al. An epidemiological survey of constipation in Canada: definitions, rates, demographics, and predictors of health care seeking. *Am J Gastroenterol* 2001;96:3130–3137.
79. Zhao YF, Ma XQ, Wang R, et al. Epidemiology of functional constipation and comparison with constipation-predominant irritable bowel syndrome: the Systematic Investigation of Gastrointestinal Diseases in China (SILC). *Aliment Pharmacol Ther* 2011;34:1020–1029.
80. Vu J, Kushnir V, Cassell B, et al. The impact of psychiatric and extraintestinal comorbidity on quality of life and bowel symptom burden in functional GI disorders. *Neurogastroenterol Motil* 2014;26:1323–1332.
81. Lackner JM, Ma CX, Keefer L, et al. Type, rather than number, of mental and physical comorbidities increases the severity of symptoms in patients with irritable bowel syndrome. *Clin Gastroenterol Hepatol* 2013;11:1147–1157.
82. Rodrigo L, Blanco I, Bobes J, et al. Remarkable prevalence of coeliac disease in patients with irritable bowel syndrome plus fibromyalgia in comparison with those with isolated irritable bowel syndrome: a case-finding study. *Arthritis Res Ther* 2013;15:R201.

83. Przekop P, Haviland MG, Zhao Y, et al. Self-reported physical health, mental health, and comorbid diseases among women with irritable bowel syndrome, fibromyalgia, or both compared with healthy control respondents. *J Am Osteopath Assoc* 2012;112:726–735.
84. Hasler WL, Schoenfeld P. Systematic review: abdominal and pelvic surgery in patients with irritable bowel syndrome. *Aliment Pharmacol Ther* 2003;17:997–1005.
85. Traub RJ, Ji Y. Sex differences and hormonal modulation of deep tissue pain. *Front Neuroendocrinol* 2013;34:350–366.
86. Mogil JS. Sex differences in pain and pain inhibition: multiple explanations of a controversial phenomenon. *Nat Rev Neurosci* 2012;13:859–866.
87. Larauche M, Mulak A, Tache Y. Stress-related alterations of visceral sensation: animal models for irritable bowel syndrome study. *J Neurogastroenterol Motil* 2011;17:213–234.
88. Larauche M, Mulak A, Tache Y. Stress and visceral pain: from animal models to clinical therapies. *Exp Neurol* 2012;233:49–67.
89. Chaloner A, Greenwood-Van Meerveld B. Early life adversity as a risk factor for visceral pain in later life: importance of sex differences. *Front Neurosci* 2013;7:13.
90. Greenspan JD, Craft RM, LeResche L, et al. Studying sex and gender differences in pain and analgesia: a consensus report. *Pain* 2007;132(Suppl 1):S26–S45.
91. Wang Z, Guo Y, Bradesi S, et al. Sex differences in functional brain activation during noxious visceral stimulation in rats. *Pain* 2009;145:120–128.
92. Meleine M, Matricon J. Gender-related differences in irritable bowel syndrome: potential mechanisms of sex hormones. *World J Gastroenterol* 2014;20:6725–6743.
93. Sanoja R, Cervero F. Estrogen-dependent changes in visceral afferent sensitivity. *Auton Neurosci* 2010;153:84–89.
94. Gintzler AR, Liu NJ. Importance of sex to pain and its amelioration; relevance of spinal estrogens and its membrane receptors. *Front Neuroendocrinol* 2012;33:412–424.
95. Mogil JS, Bailey AL. Sex and gender differences in pain and analgesia. *Prog Brain Res* 2010;186:141–157.
96. Ryan JP, Bhojwani A. Colonic transit in rats: effect of ovariectomy, sex steroid hormones, and pregnancy. *Am J Physiol* 1986;251:G46–G50.
97. Shah S, Nathan L, Singh R, et al. E2 and not P4 increases NO release from NANC nerves of the gastrointestinal tract: implications in pregnancy. *Am J Physiol Regul Integr Comp Physiol* 2001;280:R1546–R1554.
98. Bradesi S, Eutamene H, Theodorou V, et al. Effect of ovarian hormones on intestinal mast cell reactivity to substance P. *Life Sci* 2001;68:1047–1056.
99. Larauche M, Mulak A, Kim YS, et al. Visceral analgesia induced by acute and repeated water avoidance stress in rats: sex difference in opioid involvement. *Neurogastroenterol Motil* 2012;24:1031–e547.
100. Stam R, Croiset G, Bruijnzeel AW, et al. Sex differences in long-term stress-induced colonic, behavioural and hormonal disturbances. *Life Sci* 1999;65:2837–2849.
101. Tache Y, Million M, Nelson AG, et al. Role of corticotropin-releasing factor pathways in stress-related alterations of colonic motor function and viscerosensitivity in female rodents. *Gend Med* 2005;2:146–154.
102. Cook LC, Hillhouse AE, Myles MH, et al. The role of estrogen signaling in a mouse model of inflammatory bowel disease: a *Helicobacter hepaticus* model. *PLoS One* 2014;9:e94209.
103. Adeyemo MA, Spiegel BM, Chang L. Meta-analysis: do irritable bowel syndrome symptoms vary between men and women? *Aliment Pharmacol Ther* 2010;32:738–755.
104. Krarup AL, Gunnarsson J, Brun J, et al. Exploration of the effects of gender and mild esophagitis on esophageal pain thresholds in the normal and sensitized state of asymptomatic young volunteers. *Neurogastroenterol Motil* 2013;25:766–e580.
105. Pedersen J, Reddy H, Funch-Jensen P, et al. Differences between male and female responses to painful thermal and mechanical stimulation of the human esophagus. *Dig Dis Sci* 2004;49:1065–1074.
106. Kim HS, Rhee PL, Park J, et al. Gender-related differences in visceral perception in health and irritable bowel syndrome. *J Gastroenterol Hepatol* 2006; Feb;21:468–473.
107. Chang L, Mayer EA, Labus JS, et al. Effect of sex on perception of rectosigmoid stimuli in irritable bowel syndrome. *Am J Physiol Regul Integr Comp Physiol* 2006;291:R277–R284.
108. Mertz H, Naliboff B, Munakata J, et al. Altered rectal perception is a biological marker of patients with irritable bowel syndrome. *Gastroenterology* 1995;109:40–52.
109. Munakata J, Naliboff B, Harraf F, et al. Repetitive sigmoid stimulation induces rectal hyperalgesia in patients with irritable bowel syndrome. *Gastroenterology* 1997;112:55–63.
110. Stabell N, Stubhaug A, Flaegstad T, et al. Increased pain sensitivity among adults reporting irritable bowel syndrome symptoms in a large population-based study. *Pain* 2013;154:385–392.
111. Vega KJ, Palacio C, Langford-Legg T, et al. Gender variation in oesophageal motor function: analysis of 129 healthy individuals. *Dig Liver Dis* 2010;42:482–484.
112. Datz FL, Christian PE, Moore J. Gender-related differences in gastric emptying. *J Nucl Med* 1987;28:1204–1207.
113. Degen LP, Phillips SF. Variability of gastrointestinal transit in healthy women and men. *Gut* 1996;39:299–305.
114. Hutson WR, Roehrkasse RL, Wald A. Influence of gender and menopause on gastric emptying and motility. *Gastroenterology* 1989;96:11–17.
115. Knight LC, Parkman HP, Brown KL, et al. Delayed gastric emptying and decreased antral contractility in normal premenopausal women compared with men. *Am J Gastroenterol* 1997;92:968–975.
116. Wedmann B, Schmidt G, Wegener M, et al. Effects of age and gender on fat-induced gallbladder contraction and gastric emptying of a caloric liquid meal: a sonographic study. *Am J Gastroenterol* 1991;86:1765–1770.

117. Mearadji B, Penning C, Vu MK, et al. Influence of gender on proximal gastric motor and sensory function. *Am J Gastroenterol* 2001;96:2066–2073.
118. Lampe JW, Fredstrom SB, Slavin JL, et al. Sex differences in colonic function: a randomised trial. *Gut* 1993;34:531–536.
119. Meier R, Beglinger C, Dederding JP, et al. Influence of age, gender, hormonal status and smoking habits on colonic transit time. *Neurogastroenterol Motil* 1995;7:235–238.
120. Metcalf AM, Phillips SF, Zinsmeister AR, et al. Simplified assessment of segmental colonic transit. *Gastroenterology* 1987;92:40–47.
121. Rao SS, Sadeghi P, Beaty J, et al. Ambulatory 24-hour colonic manometry in slow-transit constipation. *Am J Gastroenterol* 2004;99:2405–2416.
122. Sun WM, Read NW. Anorectal function in normal human subjects: effect of gender. *Int J Colorectal Dis* 1989;4:188–196.
123. Carrington EV, Brokjaer A, Craven H, et al. Traditional measures of normal anal sphincter function using high-resolution anorectal manometry (HRAM) in 115 healthy volunteers. *Neurogastroenterol Motil* 2014;26:625–635.
124. Mazurak N, Seredyuk N, Sauer H, et al. Heart rate variability in the irritable bowel syndrome: a review of the literature. *Neurogastroenterol Motil* 2012;24:206–216.
125. Cheng P, Shih W, Alberto M, et al. Autonomic response to a visceral stressor is dysregulated in irritable bowel syndrome and correlates with duration of disease. *Neurogastroenterol Motil* 2013;25:e650–e659.
126. Kern MK, Jaradeh S, Arndorfer RC, et al. Gender differences in cortical representation of rectal distension in healthy humans. *Am J Physiol Gastrointest Liver Physiol* 2001;281:G1512–G1523.
127. Berman SM, Naliboff BD, Suyenobu B, et al. Sex differences in regional brain response to aversive pelvic visceral stimuli. *Am J Physiol Regul Integr Comp Physiol* 2006;291:R268–R276.
128. Benson S, Kotsis V, Rosenberger C, et al. Behavioural and neural correlates of visceral pain sensitivity in healthy men and women: does sex matter? *Eur J Pain* 2012;16:349–358.
129. Hobson AR, Furlong PL, Worthen SF, et al. Real-time imaging of human cortical activity evoked by painful esophageal stimulation. *Gastroenterology* 2005;128:610–619.
130. Kano M, Farmer AD, Aziz Q, et al. Sex differences in brain response to anticipated and experienced visceral pain in healthy subjects. *Am J Physiol Gastrointest Liver Physiol* 2013;304:G687–G699.
131. Berman S, Munakata J, Naliboff BD, et al. Gender differences in regional brain response to visceral pressure in IBS patients. *Eur J Pain* 2000;4:157–172.
132. Naliboff BD, Berman S, Chang L, et al. Sex-related differences in IBS patients: central processing of visceral stimuli. *Gastroenterology* 2003;124:1738–1747.
133. Labus JS, Naliboff BN, Fallon J, et al. Sex differences in brain activity during aversive visceral stimulation and its expectation in patients with chronic abdominal pain: a network analysis. *Pain Neuroimage* 2008;41:1032–1043.
134. Hong JY, Kilpatrick LA, Labus J, et al. Patients with chronic visceral pain show sex-related alterations in intrinsic oscillations of the resting brain. *J Neurosci* 2013;33:11994–12002.
135. Hong JY, Kilpatrick LA, Labus JS, et al. Sex and disease-related alterations of anterior insula functional connectivity in chronic abdominal pain. *J Neurosci* 2014;34:14252–14259.
136. Gupta A, Kilpatrick L, Labus J, et al. Early adverse life events and resting state neural networks in patients with chronic abdominal pain: evidence for sex differences. *Psychosom Med* 2014;76:404–412.
137. Jiang Z, Dinov ID, Labus J, et al. Sex-related differences of cortical thickness in patients with chronic abdominal pain. *PLoS One* 2013;8:e73932.
138. Ellingson BM, Mayer E, Harris RJ, et al. Diffusion tensor imaging detects microstructural reorganization in the brain associated with chronic irritable bowel syndrome. *Pain* 2013;154:1528–1541.
139. Adam B, Tsopelas C, Liebrechts T, et al. Host immune response determines visceral hyperalgesia in a rat model of post-inflammatory irritable bowel syndrome. *J Gastroenterol* 2013;48:1119–1127.
140. Spiller R, Lam C. An update on post-infectious irritable bowel syndrome: role of genetics, immune activation, serotonin and altered microbiome. *J Neurogastroenterol Motil* 2012;18:258–268.
141. Cremon C, Gargano L, Morselli-Labate AM, et al. Mucosal immune activation in irritable bowel syndrome: gender-dependence and association with digestive symptoms. *Am J Gastroenterol* 2009;104:392–400.
142. Flores R, Shi J, Fuhrman B, et al. Fecal microbial determinants of fecal and systemic estrogens and estrogen metabolites: a cross-sectional study. *J Transl Med* 2012;10:253.
143. Flak MB, Neves JF, Blumberg RS. Immunology. Welcome to the microgenderome. *Science* 2013;339:1044–1045.
144. Heitkemper MM, Jarrett ME, Levy RL, et al. Self-management for women with irritable bowel syndrome. *Clin Gastroenterol Hepatol* 2004;2:585–596.
145. van der Veek SM, Derkx BH, Benninga MA, et al. Cognitive behavior therapy for pediatric functional abdominal pain: a randomized controlled trial. *Pediatrics* 2013;132:e1163–e1172.
146. Ford AC, Quigley EM, Lacy BE, et al. Effect of antidepressants and psychological therapies, including hypnotherapy, in irritable bowel syndrome: systematic review and meta-analysis. *Am J Gastroenterol* 2014;109:1350–1365; quiz 1366.
147. Blanchard EB, Keefer L, Galovski TE, et al. Gender differences in psychological distress among patients with irritable bowel syndrome. *J Psychosom Res* 2001;50:271–275.
148. Guthrie E, Creed F, Dawson D, et al. A controlled trial of psychological treatment for the irritable bowel syndrome. *Gastroenterology* 1991;100:450–457.
149. Creed F, Fernandes L, Guthrie E, et al. The cost-effectiveness of psychotherapy and paroxetine for

- severe irritable bowel syndrome. *Gastroenterology* 2003; 124:303–317.
150. Gonsalkorale WM, Miller V, Afzal A, et al. Long term benefits of hypnotherapy for irritable bowel syndrome. *Gut* 2003;52:1623–1629.
151. Moser G, Tragner S, Gajowniczek EE, et al. Long-term success of GUT-directed group hypnosis for patients with refractory irritable bowel syndrome: a randomized controlled trial. *Am J Gastroenterol* 2013;108:602–609.
152. Ford AC, Talley NJ, Spiegel BM, et al. Effect of fibre, antispasmodics, and peppermint oil in the treatment of irritable bowel syndrome: systematic review and meta-analysis. *BMJ* 2008;337:a2313.
153. Rahimi R, Nikfar S, Abdollahi M. Efficacy and tolerability of alosetron for the treatment of irritable bowel syndrome in women and men: a meta-analysis of eight randomized, placebo-controlled, 12-week trials. *Clin Ther* 2008; 30:884–901.
154. Viramontes BE, Camilleri M, McKinzie S, et al. Gender-related differences in slowing colonic transit by a 5-HT3 antagonist in subjects with diarrhea-predominant irritable bowel syndrome. *Am J Gastroenterol* 2001; 96:2671–2676.
155. Delvaux M, Louvel D, Mamet JP, et al. Effect of alosetron on responses to colonic distension in patients with irritable bowel syndrome. *Aliment Pharmacol Ther* 1998; 12:849–855.
156. Tack J, van Outryve M, Beyens G, et al. Prucalopride (Resolor) in the treatment of severe chronic constipation in patients dissatisfied with laxatives. *Gut* 2009; 58:357–365.
157. Ouyang A, Wrzos HF. Contribution of gender to pathophysiology and clinical presentation of IBS: should management be different in women? *Am J Gastroenterol* 2006;101:S602–S609.
158. Cain KC, Jarrett ME, Burr RL, et al. Gender differences in gastrointestinal, psychological, and somatic symptoms in irritable bowel syndrome. *Dig Dis Sci* 2009; 54:1542–1549.
159. Ruigomez A, Garcia Rodriguez LA, Johansson S, et al. Is hormone replacement therapy associated with an increased risk of irritable bowel syndrome? *Maturitas* 2003;44:133–140.
160. Kjellstrom L, Molinder H, Agreus L, et al. A randomly selected population sample undergoing colonoscopy: prevalence of the irritable bowel syndrome and the impact of selection factors. *Eur J Gastroenterol Hepatol* 2014;26:268–275.
161. Higgins PD, Johanson JF. Epidemiology of constipation in North America: a systematic review. *Am J Gastroenterol* 2004;99:750–759.
162. Matthews CA, Whitehead WE, Townsend MK, et al. Risk factors for urinary, fecal, or dual incontinence in the Nurses' Health Study. *Obstet Gynecol* 2013;122:539–545.